

SMALL BAY INDUSTRIAL SPACE FOR LEASE



1125 Pettigrew Avenue, Regina, SK

Space Available:

- Approximately 3,363 sqft

Available:

- Immediate

Ceiling Height:

- 14 feet

Op Costs & Property Taxes:

- \$6.00 psf

Base Rate:

- \$12.00 sq ft

Landlord Tenant Improvement Allowance:

- Negotiable at offer stage and added to the base rent

Property Description:

- Multi-tenant building suited for warehousing & logistics
- Approximately 728 sq ft mezzanine storage

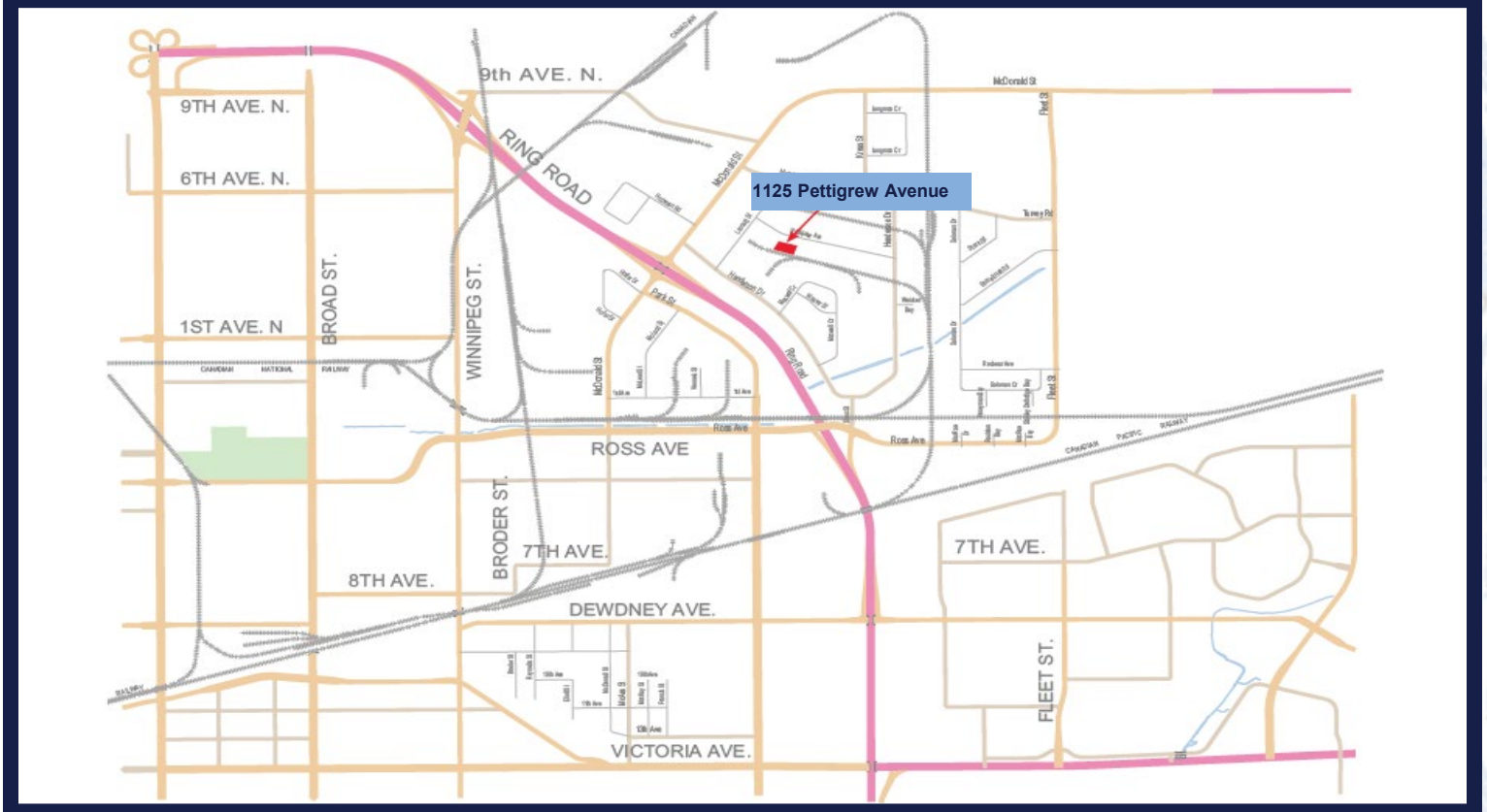
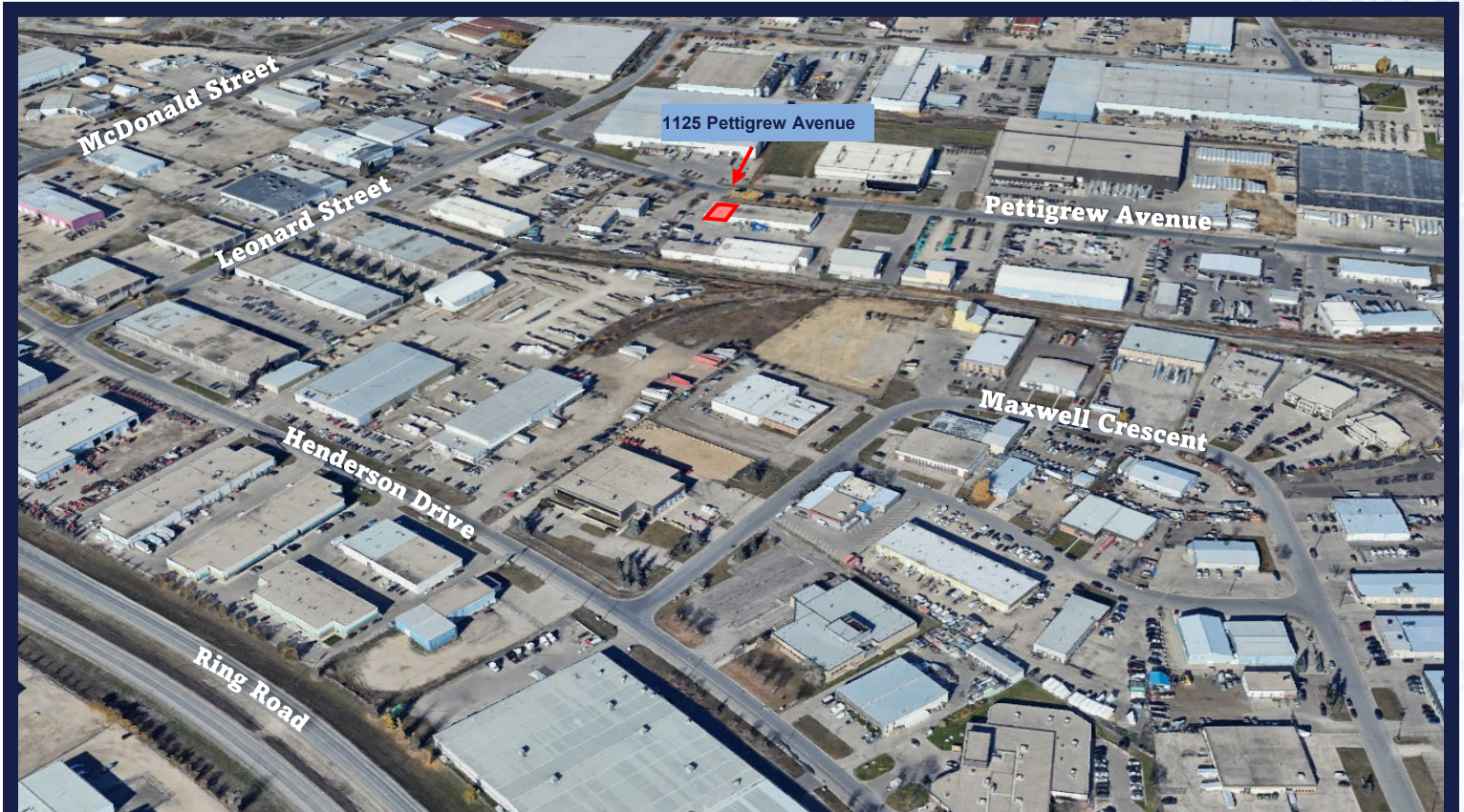
Doors:

- Overhead door currently decommissioned for mezzanine space

Contact **Austin Welter**:

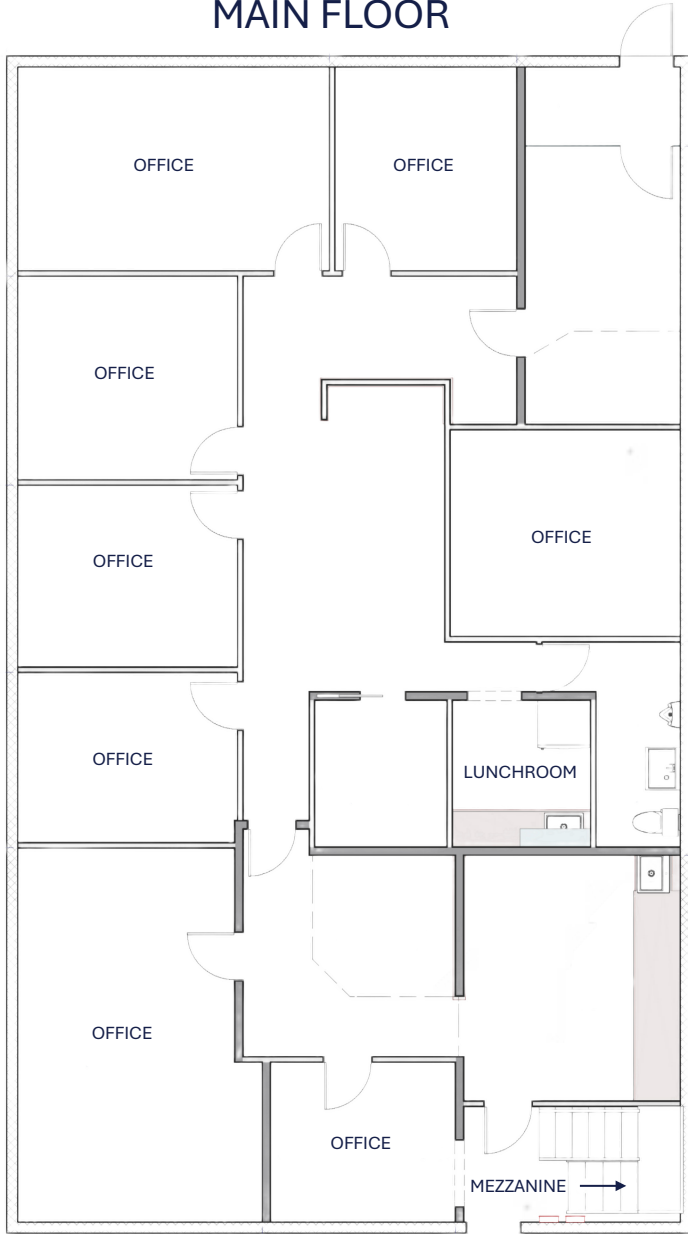
 (306) 525-1381

 awelter@westoak.ca



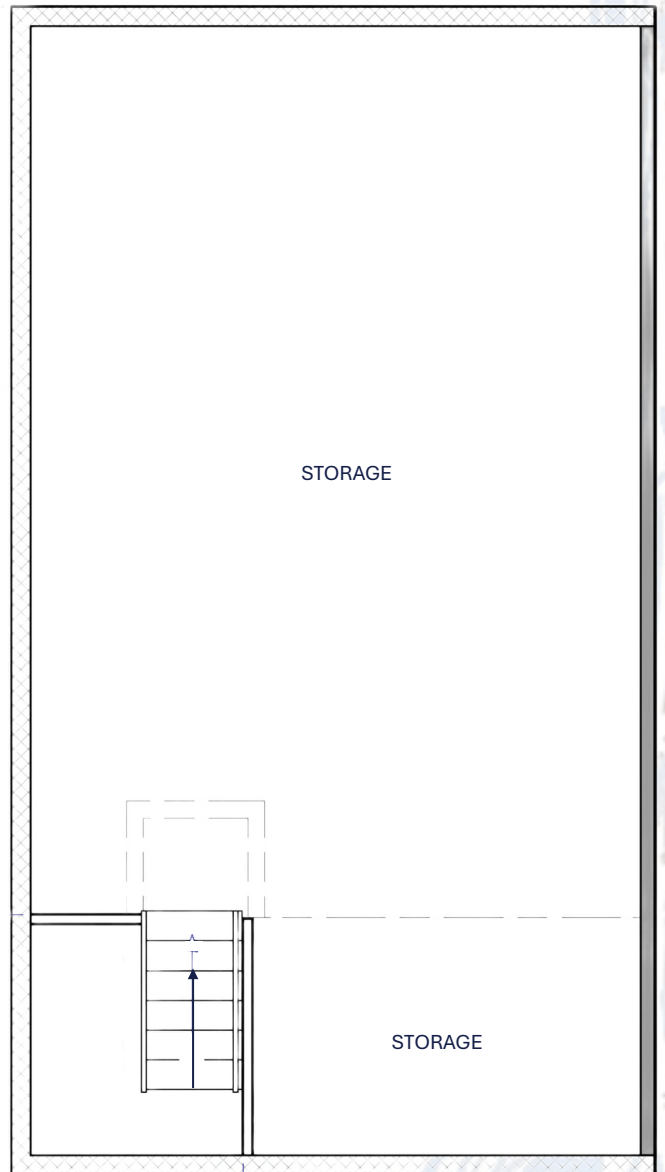


MAIN FLOOR



2,635 SQ FT

MEZZANINE STORAGE



728 SQ FT